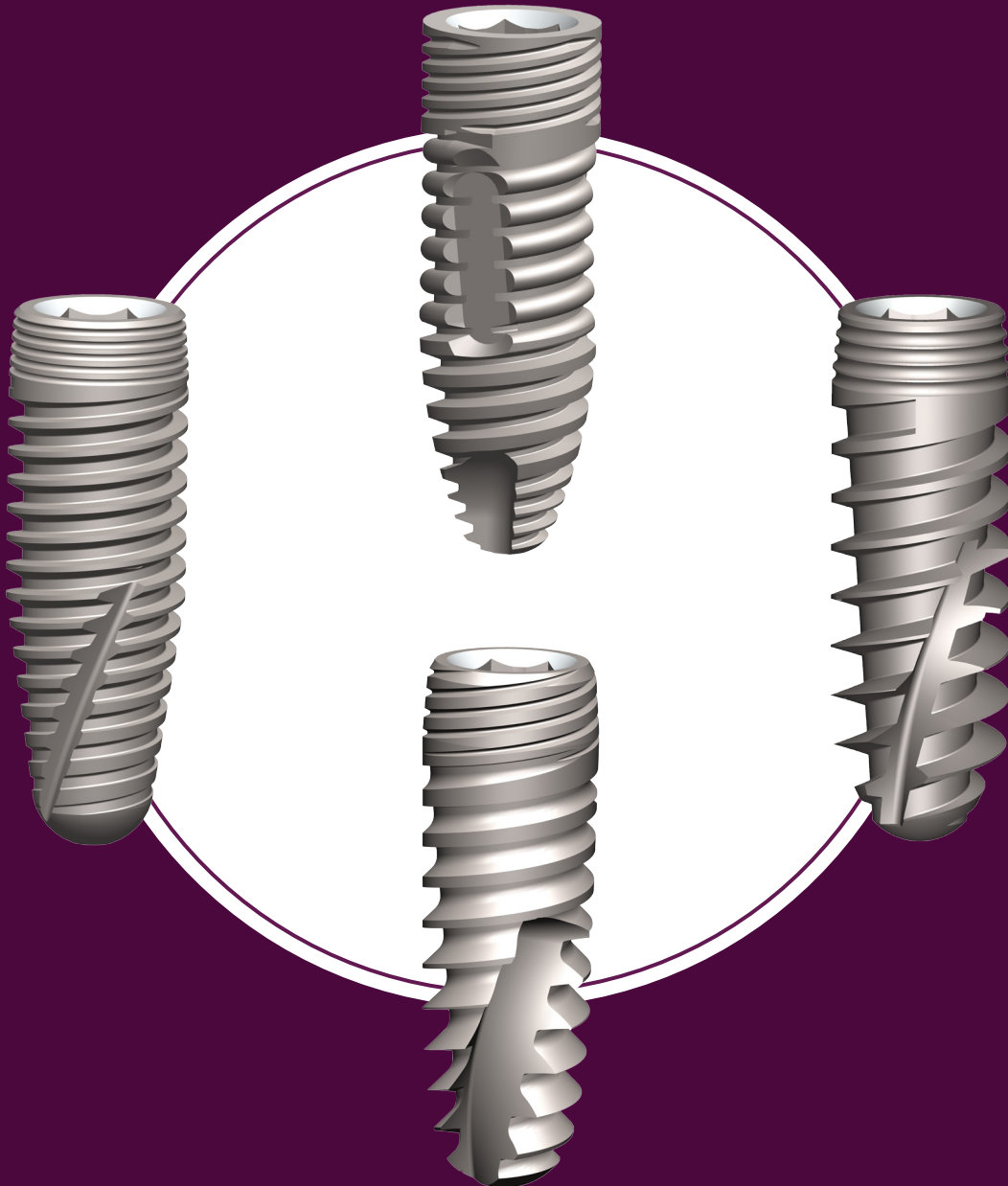


Implant Overview



SpiralTech[™]
Superior Dental Implants

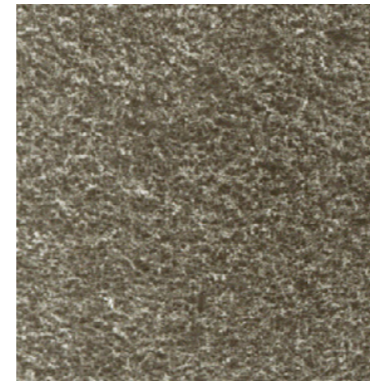
Surface Treatment...Proven Surfaces

All SpiralTech implants have a proven RBM (Resorbable Blast Media), SLA (sandblasted large-grit acid etched) or HA (hydroxyapatite) surface

Applied in a controlled environment, the RBM process uniformly micro-roughens the implant to maximize surface area, bone cell growth and adhesion. Filler layers that could later form debris or compromise healing are omitted.

RBM Surface Treatment

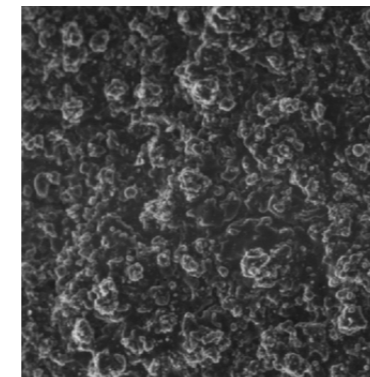
The role of a roughened surface aiding in implant fixation has been well established. Recent concern regarding embedded media from glass beading and grit blasting operations has prompted interest in developing a method to avoid this contamination. Osteolysis is a primary concern, and has been shown to relate to particulate debris. RBM Bio-Coat has succeeded in developing a process that provides a roughened surface to aid in osseointegration, without the presence of unwanted debris embedded in the implant surface.



RBM Surface

HA Coating

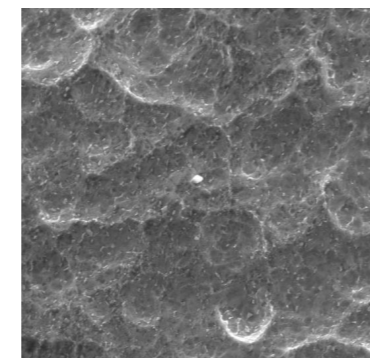
This surface is created by grit-blasting. HA is found to permeate the organic matrix of the bone, it is very biocompatible. The starting powder used by Bio-Coat is a highly pure dense powder with a tightly controlled size distribution. Powders with a large distribution of particle sizes are likely to undergo transformations to resorbable phases. HA Coated implants stimulate bone healing, resulting in an improvement in the rate and strength of initial implant integration. HA Coated surfaces have performance in the regenerated bones.



HA Coating

SLA Surface Treatment

SLA is a rough surface technology accomplished by using micro-grit sandblasting. As a result, the titanium implant surface will exhibit a rough morphology and numerous small holes. The next step is to double etching process to the implant surface in order to remove all implant contamination. The average size roughness is $2.0 \pm 5.0 \mu$ for an ideal cell attachment.

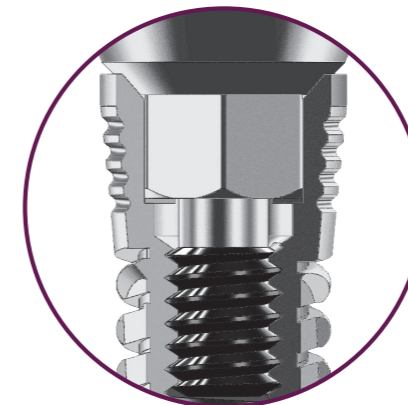


SLA Surface

Four implants...Choice of Connection.

Each implant comes with Hex or Conical Connection.

Both provide benefits of bone level platform switching. This is ideal for soft tissue maintenance and strong internal connections.



HEX CONNECTION

With many years of proven success; the hex connection is reliable and strong.



CONICAL CONNECTION

The internal conical connection is increasingly popular due to its stability, precision fit and long-term strength.



ESi™ System Patent number 9,387,027

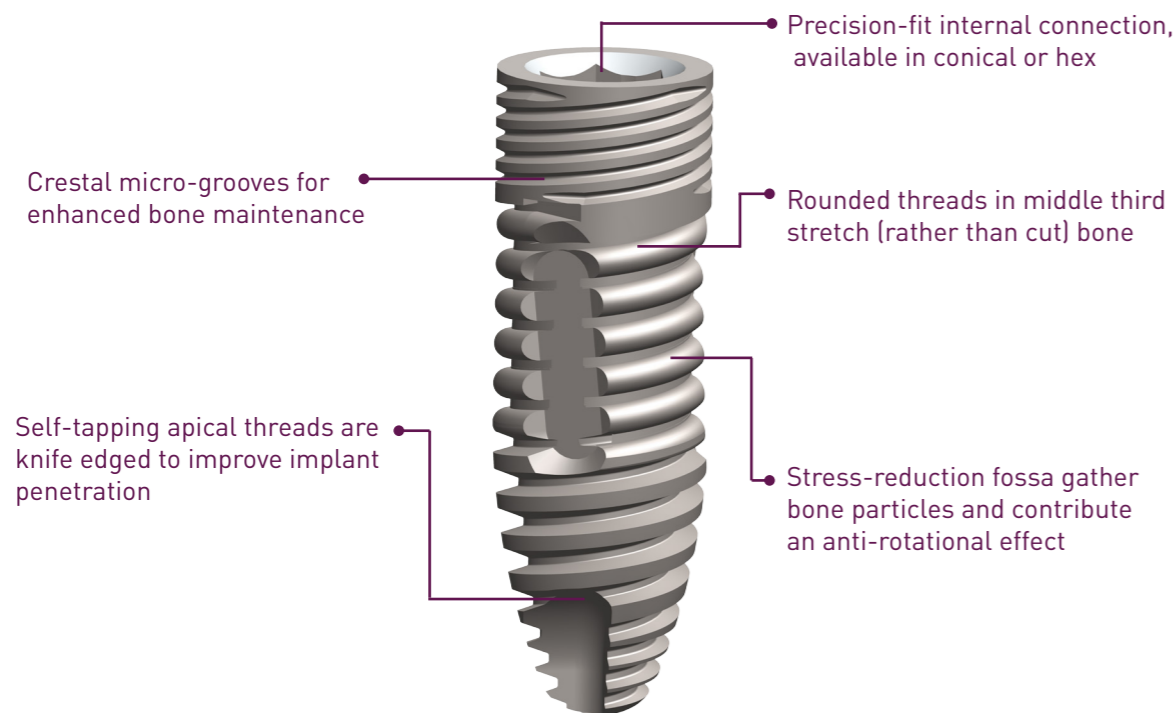
The Essential Spectrum implant (ESi™) has been patented. It is versatile and can be used in most clinical situations. The ESi has advanced features found on no other implant.

Placement of the ESi implant is intuitive and fast. The self-tapping threads allow for retracting and re-positioning to the desired location. Great for beginning and experienced surgeons alike.

All implants are provided with the corresponding cover screw and average-size healing abutment (3.5 mm diameter, 4.0 mm height).

Benefits of the ESi Solution

- The first thread helps in cutting, while the second aids in stabilization and the third thread permits micro space, which with the help of fossa accelerates the osseointegration process
- Implant can be redirected after insertion
- Good for both hard and soft bones
- High quality precision
- Economical price point



ESi™ Implants

with Standard Hex or Conical Connection

Hex Connection

Diameter (mm)	Length (mm)	Catalog No.
3.50	8.0	ESi35008
	10.0	ESi35010
	11.5	ESi35011
	13.0	ESi35013
	15.0	ESi35015
4.30	6.0	ESi43006
	8.0	ESi43008
	10.0	ESi43010
	11.5	ESi43011
	13.0	ESi43013
	15.0	ESi43015
5.00	6.0	ESi50006
	8.0	ESi50008
	10.0	ESi50010
	11.5	ESi50011
	13.0	ESi50013
	15.0	ESi50015
6.00	6.0	ESi60006
	8.0	ESi60008
	10.0	ESi60010
	11.5	ESi60011
	13.0	ESi60013
15.0	ESi60015	

Conical Connection

Diameter (mm)	Length (mm)	Catalog No.
3.00 NP	10.0	ESiC30010
	11.5	ESiC30011
	13.0	ESiC30013
	15.0	ESiC30015
3.50 NP	8.0	ESiC35008
	10.0	ESiC35010
	11.5	ESiC35011
	13.0	ESiC35013
4.30 RP	15.0	ESiC35015
	6.0	ESiC43006
	8.0	ESiC43008
	10.0	ESiC43010
4.30 RP	11.5	ESiC43011
	13.0	ESiC43013
	15.0	ESiC43015
	6.0	ESiC50006
	8.0	ESiC50008
5.00 RP	10.0	ESiC50010
	11.5	ESiC50011
	13.0	ESiC50013
	15.0	ESiC50015
	6.0	ESiC60006
5.00 RP	8.0	ESiC60008
	10.0	ESiC60010
	11.5	ESiC60011
	13.0	ESiC60013
	15.0	ESiC60015

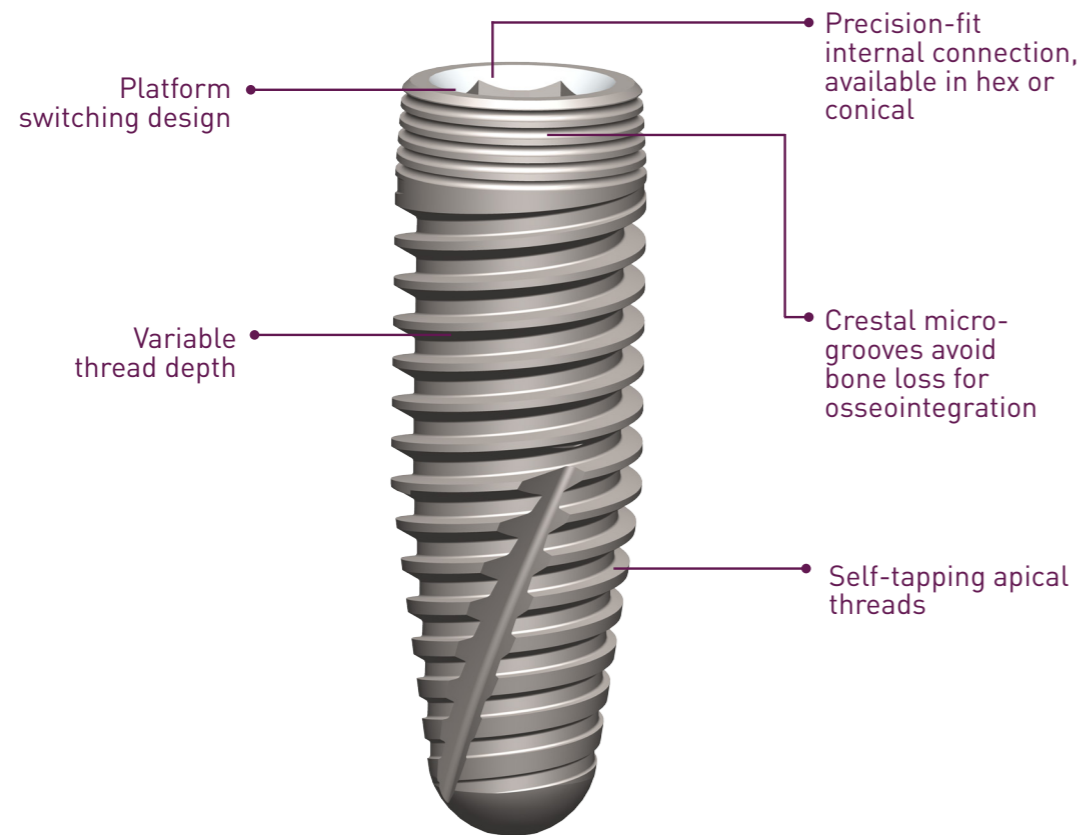
Premium Solution

The Premium Implant is a dependable, conventionally designed implant. While it can be used in all clinical situations, its conservative threads are best suited for healed ridges, with or without previous grafting.

All implants are provided with the corresponding cover screw and average-size healing abutment (3.5 mm diameter, 4.0 mm height).

Benefits of the Premium Solution

- Good for both hard and soft bones
- High quality precision
- Economical price point



PREMIUM Solution

with Standard Hex or Conical Connection

Hex Connection

Diameter (mm)	Length (mm)	Catalog No.
3.50	8.0	PR35008
	10.0	PR35010
	11.5	PR35011
	13.0	PR35013
	15.0	PR35015
4.30	6.0	PR43006
	8.0	PR43008
	10.0	PR43010
	11.5	PR43011
	13.0	PR43013
	15.0	PR43015
5.00	6.0	PR50006
	8.0	PR50008
	10.0	PR50010
	11.5	PR50011
	13.0	PR50013
6.00	15.0	PR50015
	6.0	PR60006
	8.0	PR60008
	10.0	PR60010
	11.5	PR60011
6.00	13.0	PR60013
	15.0	PR60015

Conical Connection

Diameter (mm)	Length (mm)	Catalog No.
3.50 NP	8.0	PRC35008
	10.0	PRC35010
	11.5	PRC35011
	13.0	PRC35013
	15.0	DYC35015
4.30 RP	6.0	PRC43006
	8.0	PRC43008
	10.0	PRC43010
	11.5	PRC43011
	13.0	PRC43013
	15.0	PRC43015
5.00 RP	6.0	PRC50006
	8.0	PRC50008
	10.0	PRC50010
	11.5	PRC50011
	13.0	PRC50013
6.00 RP	15.0	PRC50015
	6.0	PRC60006
	8.0	PRC60008
	10.0	PRC60010
	11.5	PRC60011
6.00 RP	13.0	PRC60013
	15.0	PRC60015

Dynamic Solution

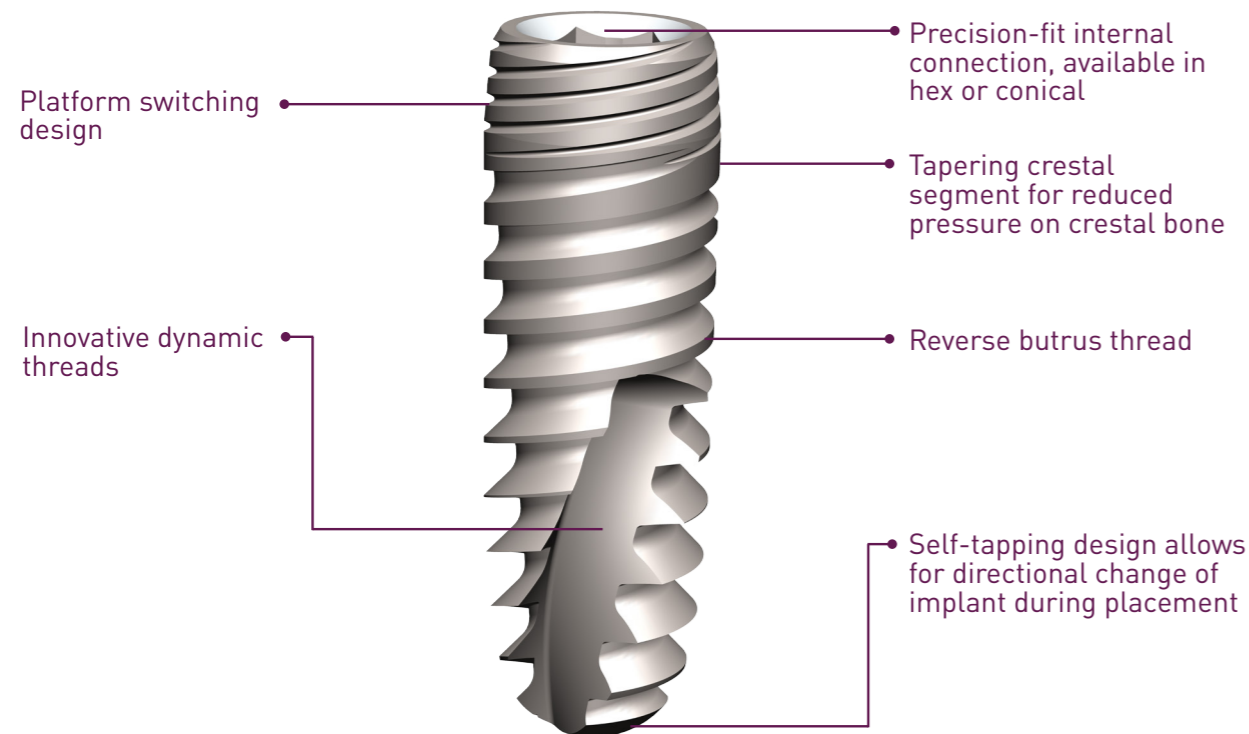
The Dynamic Implant is an evolved version of the successful high-torque implants currently available on the market. This next generation design maintains the same features that provide initial stability, but has thread refinements.

It is a suitable implant for immediate placement and/or immediate loading.

All implants are provided with the corresponding cover screw and average-size healing abutment.

Benefits of the Dynamic Solution

- Surface coding primarily RBM.
- Wide spectrum of titanium and zirconium.
- Excellent for type II III and IV bone.



DYNAMIC Implants

with Standard Hex or Conical Connection

Hex Connection

Diameter (mm)	Length (mm)	Catalog No.
3.50	8.0	DY35008
	10.0	DY35010
	11.5	DY35011
	13.0	DY35013
	15.0	DY35015
4.30	6.0	DY43006
	8.0	DY43008
	10.0	DY43010
	11.5	DY43011
	13.0	DY43013
	15.0	DY43015
5.00	6.0	DY50006
	8.0	DY50008
	10.0	DY50010
	11.5	DY50011
	13.0	DY50013
6.00	15.0	DY50015
	6.0	DY60006
	8.0	DY60008
	10.0	DY60010
	11.5	DY60011
6.00	13.0	DY60013
	15.0	DY60015

Conical Connection

Diameter (mm)	Length (mm)	Catalog No.
3.50 NP	8.0	DYC35008
	10.0	DYC35010
	11.5	DYC35011
	13.0	DYC35013
	15.0	DYC35015
4.30 RP	6.0	DYC43006
	8.0	DYC43008
	10.0	DYC43010
	11.5	DYC43011
	13.0	DYC43013
	15.0	DYC43015
5.00 RP	6.0	DYC50006
	8.0	DYC50008
	10.0	DYC50010
	11.5	DYC50011
	13.0	DYC50013
6.00 RP	15.0	DYC50015
	6.0	DYC60006
	8.0	DYC60008
	10.0	DYC60010
	11.5	DYC60011
6.00 RP	13.0	DYC60013
	15.0	DYC60015

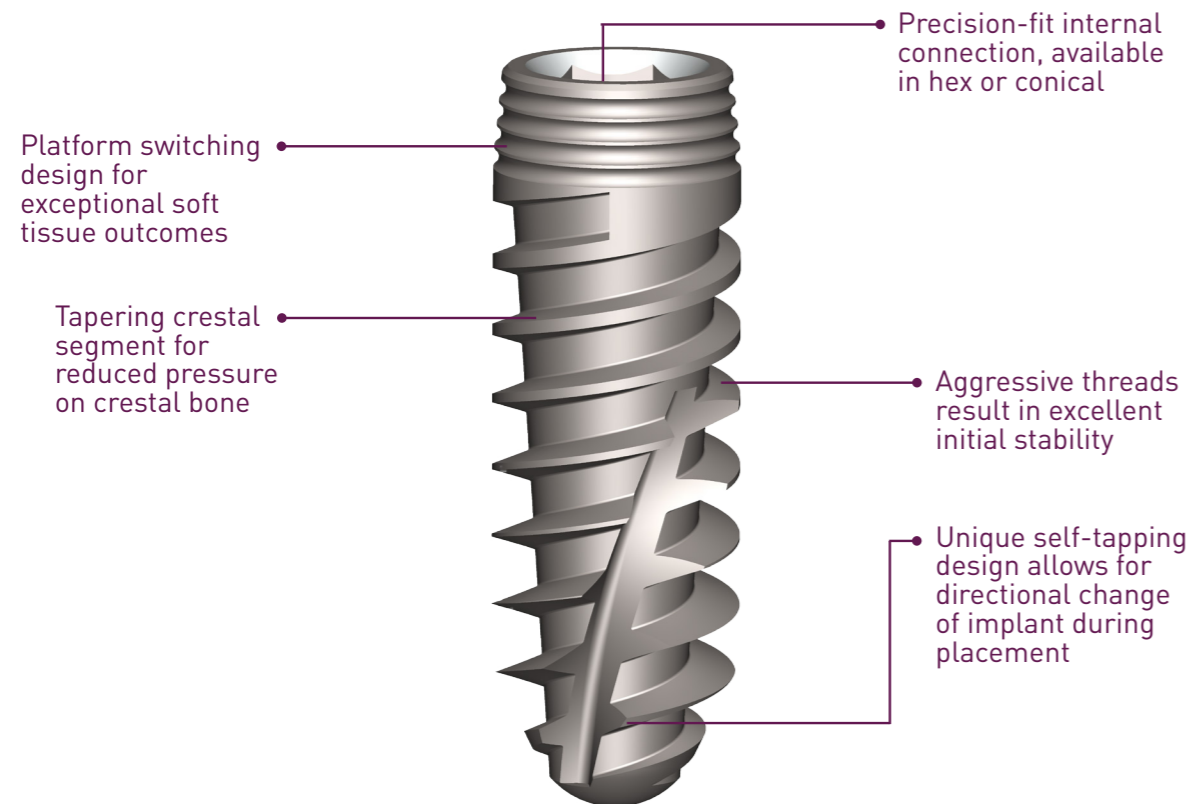
Ultimate Solution

The Ultimate implant is an aggressive implant, designed for high initial stability—even in soft bone. It is an excellent implant for immediate placement and/or immediate loading. Due to its innovative design, it can be redirected during placement to the ideal position.

All implants are provided with the corresponding cover screw and average-size healing abutment (3.5 mm diameter, 4.0 mm height).

Benefits of the Ultimate Solution

- Surface coding primarily RBM.
- Wide spectrum of titanium and zirconium.
- Excellent for type II III and IV bone.



ULTIMATE Implants

with Standard Hex or Conical Connection

Hex Connection

Diameter (mm)	Length (mm)	Catalog No.
3.50	8.0	UL35008
	10.0	UL35010
	11.5	UL35011
	13.0	UL35013
	15.0	UL35015
4.30	6.0	UL43006
	8.0	UL43008
	10.0	UL43010
	11.5	UL43011
	13.0	UL43013
	15.0	UL43015
5.00	6.0	UL50006
	8.0	UL50008
	10.0	UL50010
	11.5	UL50011
	13.0	UL50013
6.00	15.0	UL50015
	6.0	UL60006
	8.0	UL60008
	10.0	UL60010
	11.5	UL60011
	13.0	UL60013
	15.0	UL60015

Conical Connection

Diameter (mm)	Length (mm)	Catalog No.
3.00 NP	10.0	ULC33010
	11.5	ULC3011
	13.0	ULC33013
	15.0	ULC33015
3.50 NP	8.0	ULC35008
	10.0	ULC35010
	11.5	ULC35011
	13.0	ULC35013
	15.0	ULC35015
4.30 RP	6.0	ULC43006
	8.0	ULC43008
	10.0	ULC43010
	11.5	ULC43011
	13.0	ULC43013
5.00 RP	15.0	ULC43015
	6.0	ULC50006
	8.0	ULC50008
	10.0	ULC50010
	11.5	ULC50011
6.00 RP	13.0	ULC50013
	15.0	ULC50015
	6.0	ULC60006
	8.0	ULC60008
	10.0	ULC60010
	11.5	ULC60011
	13.0	ULC60013
	15.0	ULC60015



875 N. Michigan Avenue, Suite 3106
Chicago, IL 60611
info@spiraltech.com

www.spiraltech.com

Sales and Services

USA Toll Free: 1 (888) 991-7997
Local/International: 1 (312) 440-7777
Order 24/7 at www.SpiralTech.com

ISO 13485:2003
EC Certificate US15/842415
F/7.5.1.1_40 Rev.05 3.1.17