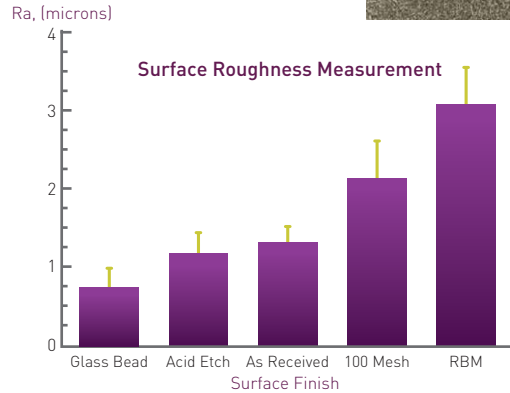
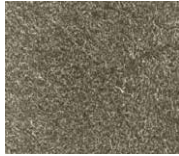


THREE IMPLANTS TWO CONNECTIONS TWO PROVEN SURFACES

RBM Surface Treatment—

It is well established that a roughened surface aids in the implant fixation process. Osteolysis is the primary concern. RBM Bio-Coat has succeeded in developing a process that provides a roughened surface to aid in osseointegration without the presence of unwanted debris embedded in the implant surface.

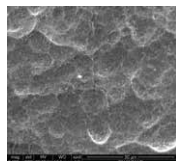
RBM surface



SA Surface Treatment—

SA is a rough surface technology accomplished by using micro-grit sandblasting. As a result, the titanium implant surface will exhibit a rough morphology and numerous small holes. A double etching process is then applied to the implant surface in order to remove all implant contamination. The average size roughness is $2.0 \pm 5.0 \mu$ for an ideal cell attachment.

SA surface



www.spiraltech.com

OUR COMPANY



Founded in 2012, SpiralTech was created to fill a void in the dental implant world—simplified treatment paired with the best technologies and customer service.

SpiralTech's goal is to provide doctors of all experience levels with innovatively designed implants and accessories while providing all of the necessary educations and services.

Ultimately, our mission is to enhance the doctor-patient experience.

The ESi implant product line is the first step in what we see as a continuous journey towards clinical excellence.

ESi™ Essential Spectrum Implant



HEADQUARTERS



875 N. Michigan Avenue, Suite 3106
Chicago, IL 60611
312-440-7777
Toll free (888) 991-7997

ISO 13485:2003
EC Certificate US15/842415
ESiBrochure-V10-9.29.17

© 2016 SpiralTech Superior Dental Implants, Inc. All Rights Reserved.



ESi IMPLANT SYSTEMS

The ESi implant is versatile and can be used in most clinical situations. The ESi has an advanced thread system found on no other implant.

Placement of the ESi implant is intuitive and fast. The self-tapping threads allow for retracting and re-positioning to the desired location. Great for beginning and experienced surgeons alike.

All implants are provided with the corresponding cover screw and average size healing abutment.

Benefits of ESi

- Multi-thread system assists surgeons in placement to the desired location
- Implant can be redirected after insertion
- First threads helps cut into bone and allows for redirection of implant during placement
- Second thread system stabilizes while third thread system containing fossa avoids creating a stressful bone environment within the middle of the implant
- Fossa stores bone particles and enhances osseointegration
- Implant crestal area contains micro-rings with converging angles that reduce trabecular bone resorption, especially during immediate placement
- Good for both hard and soft bone
- High quality precision
- Economical price point

toll free 888-991-7997



HEX CONNECTION



CONICAL HEX CONNECTION



ESi Implant maintains root formation

ONE OF OUR SUPERIOR PRODUCTS, ESi IMPLANT

Knife-edged threads to improve implant penetration

Rounded threads located in middle third reduce potential implant internal bone pressure

Multi-threaded system designed to replicate natural teeth

Fossa reduces implant stress, stores bone particles and enhances osseointegration

Implant crestal area contains micro-rings with converging angles that reduce trabecular bone resorption, especially during immediate placement

Conical Hex or Hex connections

